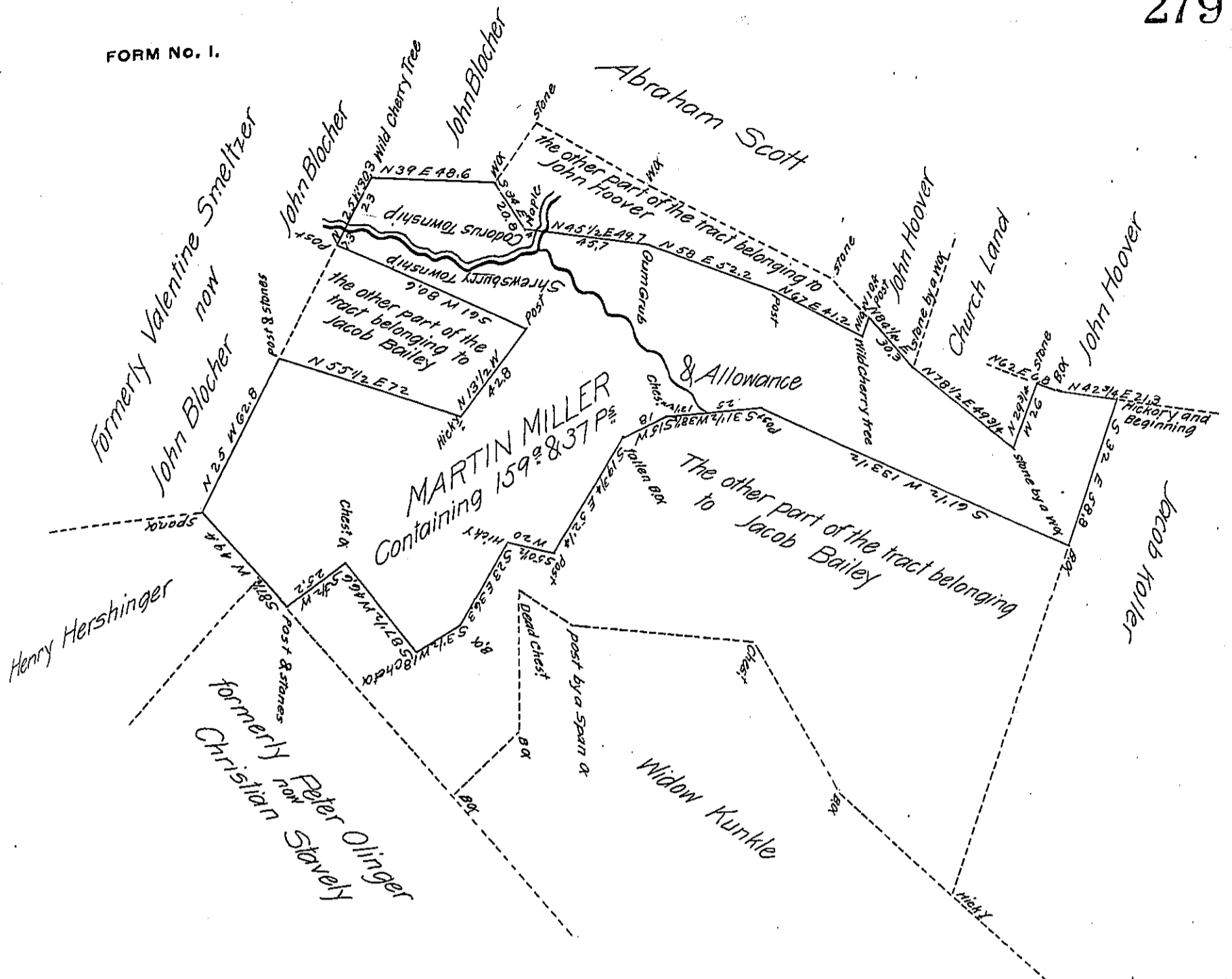


FORM No. 1.



Situate the greater part in Shrewsbury and a Small part in Codorus Township in the County of York Containing as above set forth 159 1/2 & 37 Perches and allowance Being part of a Larger tract of 312 1/2 & 143 Perches & allow^{ce} of Land which was Originally Surveyed by William Kersey late D.S. on the 2nd day of the 1st Month 1789 In Pursuance of a Warrant for ^{ce} Granted to Martin Miller bearing date the 15th day of November AD 1746. And now Resurveyed and divided off from the said Larger Tract of Land on the 2nd of August Anno Domini 1811 for and at the request of Martin Merkle the present owner who desired the same to be Returned for Confermatin this 27th day of February Anno Domini 1813.

To Andrew Porter Esq^t }
 Surveyor General }
 Harrisburg Pa }

Per.
 Jacob Spangler D.S.
 Say 28 Oct^r 1746

IN TESTIMONY that the above is a copy of the original remaining on file in the Department of Internal Affairs of Pennsylvania, made conformably to an Act of Assembly approved the 16th day of February, 1833, I have hereunto set my Hand and caused the Seal of said Department to be affixed at Harrisburg, this fifth day of February 1906

Goac R. Brown
 Secretary of Internal Affairs.